

## Application

The 6500 Series Senior™ gauges are designed for use in low pressure tanks 0-25 psig [0-1,7 Bar] containing diesel fuel, gasoline, fuel oil and lubricating oils. Used in many applications such as construction equipment, stationary generators, boats, farm equipment and home heating.

## General Information & Features

The 6500 Series Senior™ gauges are available in gear-action models for top, centerline or angle mounting. In lever-action models centerline mounting is only available. The standard float is nitrile rubber. Aluminum or stainless steel Floats are available at extra cost. The gauge is mounted to a Mating Senior™ flange 2 1/2" bolt circle [63,5mm] using four 1/4"-28 X 9/16" long screws. The gasket is Buna-N.

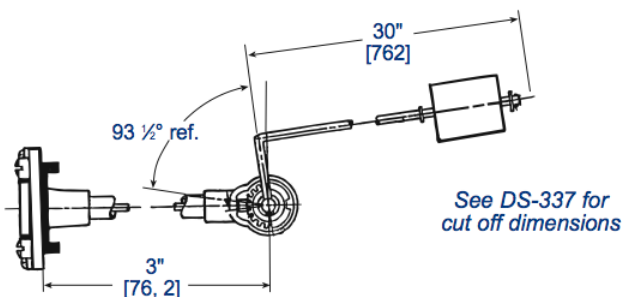


Model#	Action	Mounting	Dial, Sender or Switch Data
6540	Gear	Top	Senior™ TwinSite™ Sender in choice of 0-30, 0-90, or 240-30 Ohm ranges. #5002S00062 direct-reading dials may also be used.
6543		C/L or Angle	
L6543	Lever	C/L	
6560	Gear	Top	Senior™ side-reading fractional
6580		C/L or Angle	Senior™ direct-reading fractional
6583		C/L	
L6583	Lever	C/L	

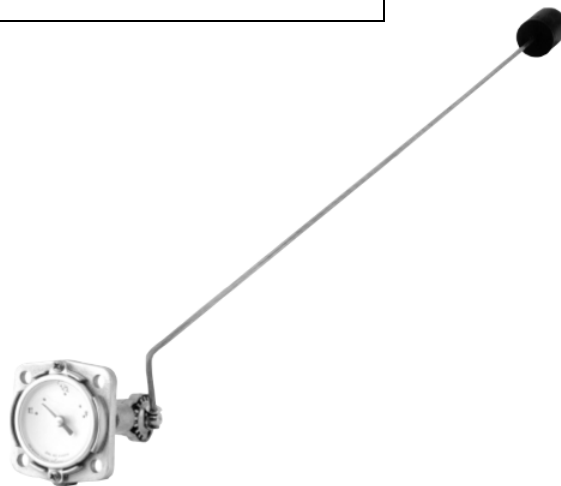
## Top Mounting Adjustable Liquid-Level Gauges

Model#	Mounting	Dial or Sending Data
6580-0151	Top	.#5002S01379 Senior direct-reading fractional dial .#P5880S02547 Senior TwinSite™ dial 0-90 Ohms .#P5648S02547 Senior TwinSite™ dial 240-30 Ohms

\*Also available with 0-90 or 240-30 ohm sender.



**Adjustable 6580 Top Mount Gauge**



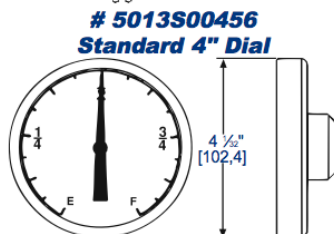
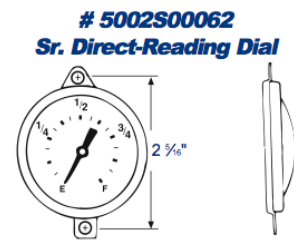
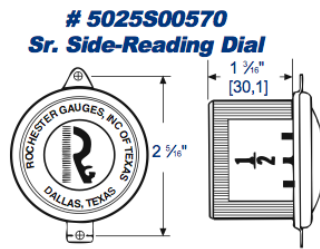
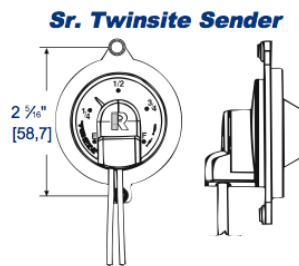
See reverse side for dimensional data, materials of construction, performance, and advice on how to order.

ROCHESTER GAUGES INTERNATIONAL S.A.

Z.I. WAVRE NORD - AVENUE LAVOISIER, 6 - 1300 WAVRE - BELGIUM

Phone: +32(0)10241010 Fax: +32(0)10228139 Web site: <http://www.rochester-gauges.be> E-mail: [info@rochester-gauges.be](mailto:info@rochester-gauges.be)

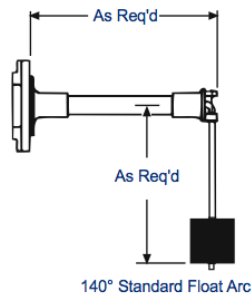
**MADE  
IN  
EUROPE**



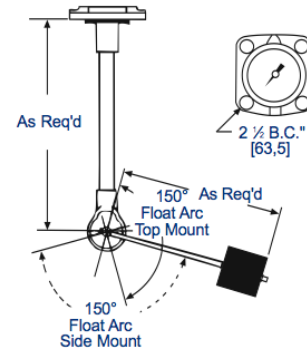
Note: This dial is used in conjunction with 93-2 mounting bracket and 39-2 bezel.

[METRIC]

**Lever Action Gauge**



**Gear Action Gauge**



**General Specifications\***

**Accuracy**

Accuracy depends on proper sizing of gauge and tank Configuration. Normally, direct-reading dials are  $\pm 3\%$ ; TwinSite™ senders are  $\pm 7\%$ . Vibration improves accuracy.

**Temperature Range**

-40F to +158°F, -40 to 70C

**Humidity**

Paint exposed portions of gauge, less dial, for marine Applications.

**Shock & Vibration**

Suitable for mobile applications.

**Power**

0.5 watts maximum for TwinSite™ versions.

**Tank Pressure**

Up to 50 psig [3,4Bar]

**Approvals**

These direct indicating gauges are UL listed for flammable Liquids. Some models UL recognized for marine Service.

**When ordering, specify**

1. Gauge model number.
2. Tank diameter and riser height.
3. Mounting location.
4. Ohm range on TwinSite™ versions.
5. Preferred switch on switch gauges, if other than standard.
6. Any listed options or preferences.

\*Materials and specifications are subject to change without notice.  
Pressure ratings subject to change due to temperature and other environmental considerations.

**Materials of Construction\***

**Head**

Die cast aluminum

**Centershaft, Support Tube & Float Rod**  
Tempered aluminum

**Gears, Cross Stud & Bearings**

Stainless steel

**Drive Magnet**

Alnico

**Gear Housing**

Acetal plastic

**Float**

Nitrile rubber

**Gasket**

Buna-N, 0015-00004 or 0015-00079

**Direct Reading Dial**

Aluminum with acrylic crystal, hermetically sealed.

**Side Reading Dial**

Aluminum with polycarbonate crystal, Hermetically sealed.

**TwinSite™ Sender**

Polyamide.

**Screws**

Zinc-plated steel 1/4" -28X 9/16" long.